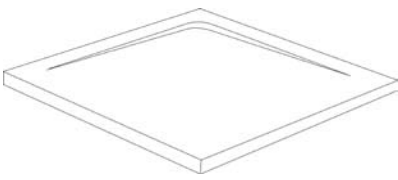









Optimum

Installation Instructions

Parts Supplied

Ref	Description	Illustration* (Shape of tray may vary from illustration)	Qty
A	Shower Tray		1
B	Flange Plate		1
C	Screws		5
D	Bottle Trap		1
E	Extendable Flexi Waste Pipe		1
F	Drill Bit		1
G	Large Dome		1
H	Replacement Lower Seal		1

Before You Start:

- Please note that although these instructions are comprehensive we always recommend that a technically competent installer undertakes the installation.
- For raised installation, please use the Universal Panel and Easy Plumb kit.
- **Caution:** Care should be taken when drilling into walls or floors to avoid hidden pipes or electrical cables.
- **When handling your shower tray take care not to damage the bottom edges and when installing take particular care to protect the visible surfaces from impact damage or abrasions.**
- Check that the shower tray is the colour, size, shape and type you require.
- Unpack and check the quality and for any damage. Do not install if not satisfied and contact your local supplier.
- Check that the top surface of the shower tray is compatible with your intended shower enclosure, taking into account the loss of dimension that will result after tiles etc have been fitted.
- If you install this shower tray in conjunction with a steam unit, you must ensure the steam outlet is at a minimum of 350mm from the top of the tray.
- When considering your installation method, you should be able to attach or repair your waste or waste outlet in situ.

Floor Level Installation for Concrete or Other Solid Floors

Tools and Materials Required (not supplied)

- Installation Compound Adhesive or a Suitable Contact Adhesive
- Cross-Head Screw Driver
- Drill
- Pencil
- Spirit Level
- Trowel
- Masking Tape
- Plumbing pipe and fittings as necessary
- Silicone sealant and Silicone cleaning solvent

- 1 Place the shower tray (A) in position on the floor (ensuring surface is level) and mark the perimeter and waste hole on the floor (See Fig 1).
- 2 Form a trench in the floor to hold the waste pipe and the bottle trap (D).
- 3 Install the waste pipe, bottle trap (D) and flexi pipe (E) in the trench in accordance with building regulations, then blank off the trench so it remains clear after laying an adhesive bed on the area to support the shower tray (A), (See Fig 2).

Note! Some shower trays have a protective film (indicated by a label on the surface) which must now be removed.

- 4 If fitting the optional Versatile Seal Strip follow the instructions supplied with the seal strip and attach the strip to the shower tray.

- 5 Before proceeding dry fit all items in situ to ensure compatibility.

Note! It is normal for the tray to appear elastic when undertaking a test dry fit.

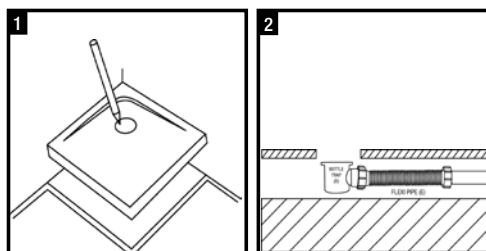
- 6 Use installation compound adhesive or a suitable adhesive to cover the full area under the shower tray. Apply or trowel to a thickness suitable to allow levelling and full support of the shower tray (See Fig 3 page 3).

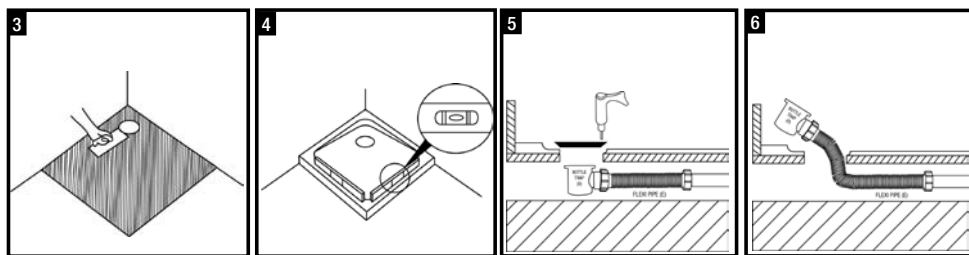
Note! Always follow the instructions supplied with an adhesive and do not glue the bottle trap (D) or flexi pipe (E) in position.

- 7 Place the shower tray (A) onto the wet adhesive ensuring that it is fully supported. Level the top rims only as the shower tray has a built in fall for adequate drainage (See Fig 4 page 3).

Note! Ensure tray is fully stuck down, weight down if necessary.

- 8 Remove any excess and allow adhesive to set. Place the flange plate (B) in position on shower tray (A) and then using the 2mm drill bit (F) drill a hole in the shower tray (A) through the centre of one of the five pre-drilled holes in the flange plate (B). Screw the flange plate (B) using one of the five screws (C) to the shower tray (A) **DO NOT OVERTIGHTEN**. (See Fig 5 page 3).

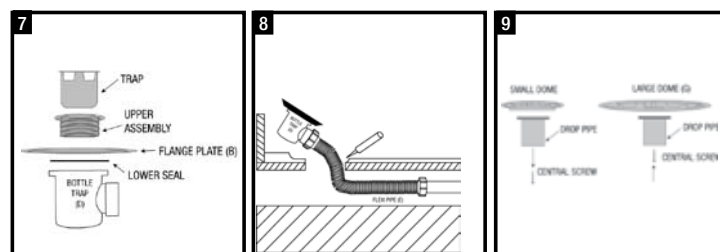




- 9 With the flange plate (B) securely in position proceed to drill a hole through the remaining pre drilled holes in the flange plate (B) into the shower tray (A) (See Fig 5). Then unscrew and remove the flange plate (B) from the shower tray (A).
- 10 Extend the flexi pipe (E) with bottle trap (D) attached by pulling through the hole in the shower tray (A) (See Fig 6) then assemble (without dome) onto flange plate (B) (See Fig 7), using lower seal (H) making sure that the flange plate (B) is aligned with the pre-drilled screw holes around the periphery of the outlet hole.

Note! Discard both upper and lower seals supplied with bottle trap (D) when assembling on to flange plate (B).

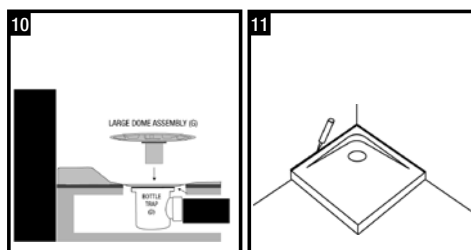
A silicone sealant should be used on all surfaces against the flange plate (B).



- 11 Apply silicone over the entire area between the edge of the outlet hole in the shower tray (A) and the underside of the flange plate (B) (See Fig 8). Push the assembly back through the hole taking care not to kink the flexi waste pipe (E) and attach flange plate (B) to the shower tray (A) using the five screws (C) **DO NOT OVERTIGHTEN**. Remove any excess silicone.
- 12 Remove drop pipe from original small dome by unscrewing the central screw in the base of the dome. Re-attach drop pipe to large dome (G) by using the same central screw in the base (See Fig 9). Then push fit large dome assembly into bottle trap (D) (See Fig 10).

Note! The shower tray and all connections must now be checked for water tightness and drainage over the entire area.

- 13 After all checks and adjustments seal along the tiling line with silicone sealant if necessary use a proprietary silicone cleaning solvent prior to application (See Fig 11).



Floor Installation for Suspended Floors

Tools and Materials Required (not supplied)

- Installation Compound Adhesive or a Suitable Contact Adhesive
- Cross-Head Screw Driver
- Drill
- Drill bit to suit floor screws
- Hole Cutter, size to suit the waste
- Jigsaw
- Pencil
- Spirit Level
- Trowel
- Floor screws, suitable to fix marine plywood board to floor
- Marine Plywood board (18mm thick minimum)
- Masking Tape
- Plumbing pipe and fittings as necessary
- Silicone sealant and Silicone cleaning solvent

- 1 Place the shower tray (A) in position on the floor and mark the perimeter.
- 2 The floor area (or larger) covered by the shower tray must be removed and replaced with a single (level) piece of marine plywood (min 18mm thick).
- 3 Put the plywood in position, place the shower tray (A) on the plywood and mark the waste hole location (See Fig 12).
- 4 Remove the shower tray (A), and drill or cut a hole in the plywood 20mm larger than the total size of the hole in the shower tray (A) (See Fig 13).
- 5 Install the waste pipe, bottle trap (D) and flexi pipe (E) in the cavity (See Fig 14) and then screw plywood in position.

Note! Some shower trays have a protective film (indicated by a label on the surface) which must now be removed.

- 6 If fitting the optional Versatile Seal Strip follow the instructions supplied with the seal strip and attach the strip to the shower tray.

- 7 Before proceeding dry fit all items in situ to ensure compatibility.

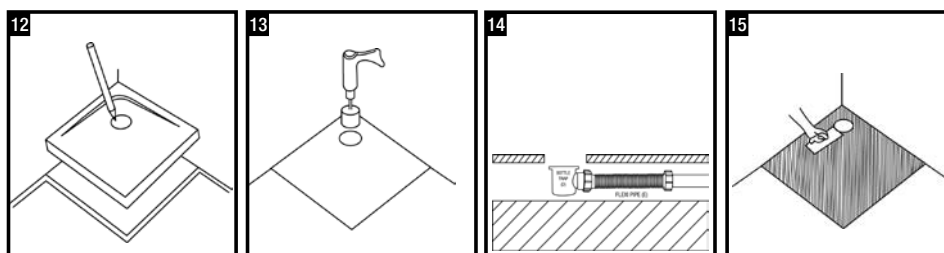
Note! It is normal for the tray to appear elastic when undertaking a test dry fit.

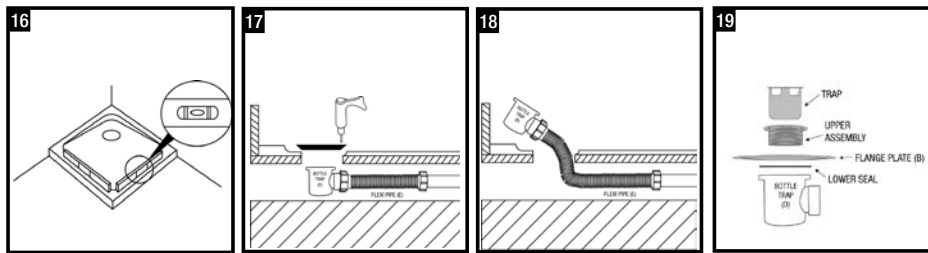
- 8 Use installation compound adhesive or a suitable adhesive to cover the full area under the shower tray. Apply or trowel to a thickness suitable to allow levelling and full support of the shower tray (See Fig 15 page 5).

Note! Always follow the instructions supplied with the adhesive.

- 9 Place the shower tray (A) onto the wet adhesive ensuring that it is fully supported. Level the top rims only as the shower tray has a built in fall for adequate drainage (See Fig 16 page 5).

Note! Ensure tray is fully stuck down, weight down if necessary.





- 10 Remove any excess and allow adhesive to set. Place the Flange Plate (B) in position on Shower Tray (A) and then using the 2mm Drill Bit (F) drill a hole in the shower tray (A) through the centre of one of the five pre drilled holes in the flange plate (B). Screw the flange plate (B) using one of the five screws (C) to the shower tray (A) **DO NOT OVERTIGHTEN**. (See Fig 17).
- 11 With the flange plate (B) securely in position proceed to drill a hole through the remaining pre drilled holes in the flange plate (B) into the shower tray (A) (See Fig 17). Then unscrew and remove the flange plate (B) from the shower tray (A).
- 12 Extend the flexi pipe (E) with bottle trap (D) attached by pulling through the hole in the shower tray (A) (See Fig 18) then assemble (without dome) onto flange plate (B) (See Fig 19 on page 7), using lower seal (H) Making sure that the flange plate (B) is aligned with the pre-drilled screw holes around the periphery of the outlet hole.

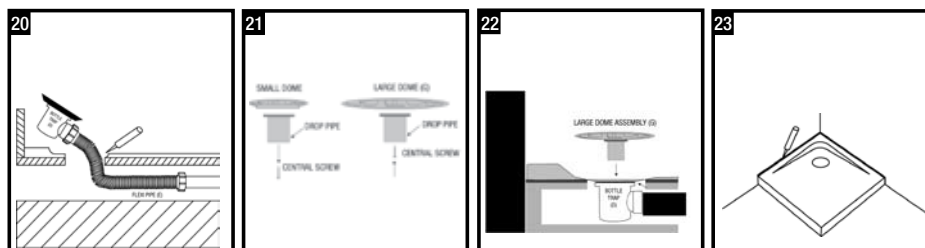
Note! Discard both upper and lower seals supplied with bottle trap (D) when assembling on to flange plate (B).

A silicone sealant should be used on all surfaces against the Flange Plate (B).

- 13 Apply silicone over the entire area between the edge of the outlet hole in the shower tray (A) and the underside of the flange plate (B) (See Fig 20). Push the assembly back through the hole taking care not to kink the flexi waste pipe (E) and attach flange plate (B) to the shower tray (A) using the five screws (C) **DO NOT OVERTIGHTEN**. Remove any excess silicone.
- 14 Remove drop pipe from original small dome by unscrewing the central screw in the base of the dome. Re-attach drop pipe to large dome (G) by using the same central screw in the base (See Fig 21). Then push fit large dome assembly into bottle trap (D) (See Fig 22).

Note! The shower tray and all connections must now be checked for water tightness and adequate drainage over the entire area.

- 15 After all checks and adjustments seal along the tiling line with silicone sealant if necessary use a proprietary silicone cleaning solvent prior to application (See Fig 23).



Care & Use of Your Shower Tray

Water feeds where possible should not be connected to a water softener system as salts used with some types of units may discolour the surface.

It is normal for small amounts of localized water to be retained in the shower tray after use which should be wiped dry immediately to prevent build up of mineral sediments.

The shower tray should be cleaned with warm, soapy water only. Do not use scourers, abrasives or chemical cleaners.

Troubleshooting

- Q** The Bottle Trap under the tray is directly over an obstruction at floor level.
- A** Consider switching to a 'Raised Installation' or re-locating shower tray.

- Q** Tray appears springy when walked on.
- A** Tray has not been fully stuck down or support not rigid, re-install if necessary.

- Q** There is water retaining in the base of tray.
- A** Check that the tray is level (top rims) as it is normal for small amounts of localized water to be retained.

Technical Service Line 01684 293311
Monday - Friday, 9am - 5pm